

# REF 2014: Unit of assessment summary data

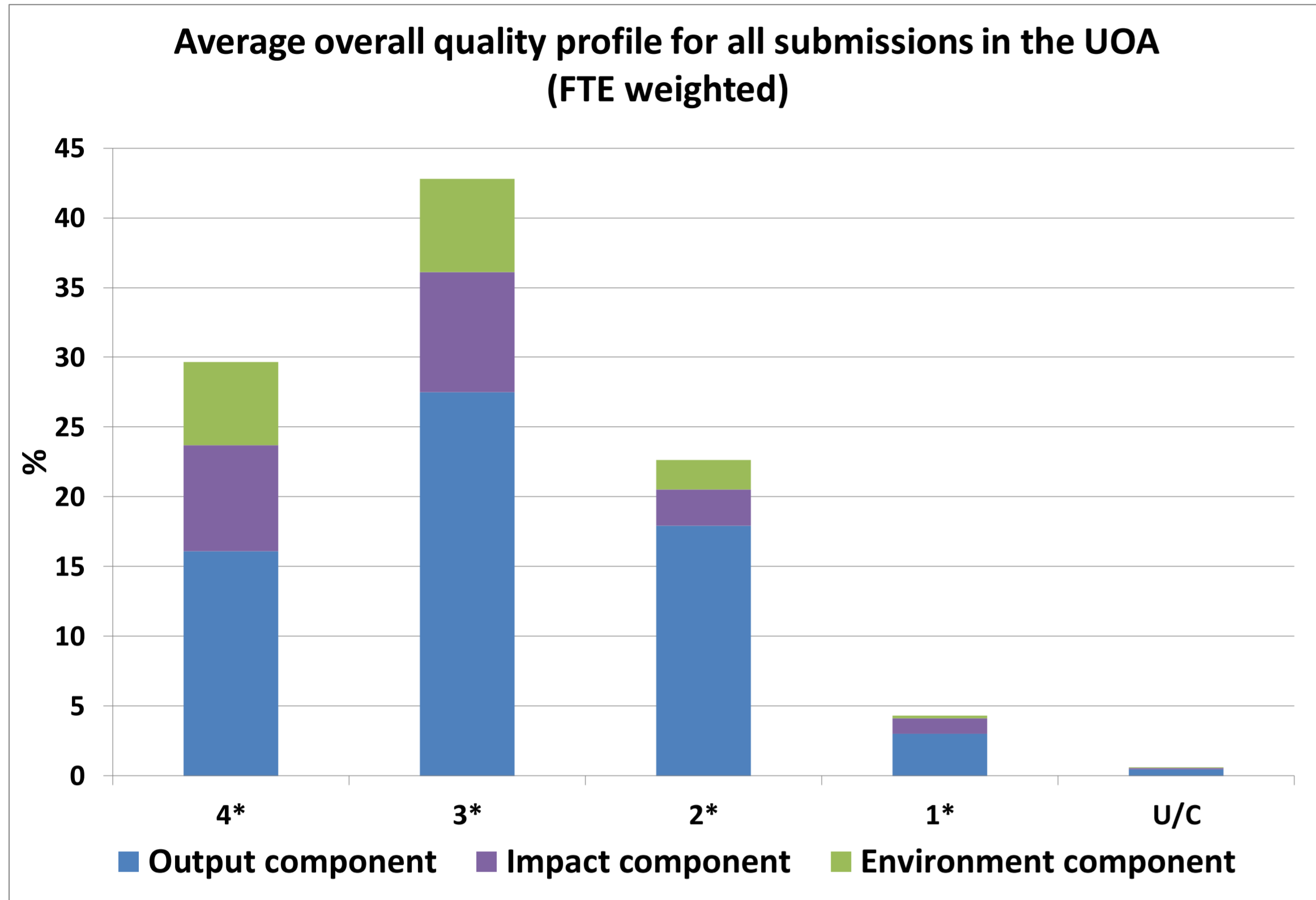
## UOA 28: Modern Languages and Linguistics

### Submission information

Number of submissions	57
Category A FTE staff submitted	1,386
Headcounts of category A and C staff submitted	1,464
Headcounts of early career researchers (REF1a)	257
Number of outputs submitted	4,943
Number of case studies submitted	192

Doctoral research degrees awarded				
2008-09	2009-10	2010-11	2011-12	2012-13
316	314	317	336	412

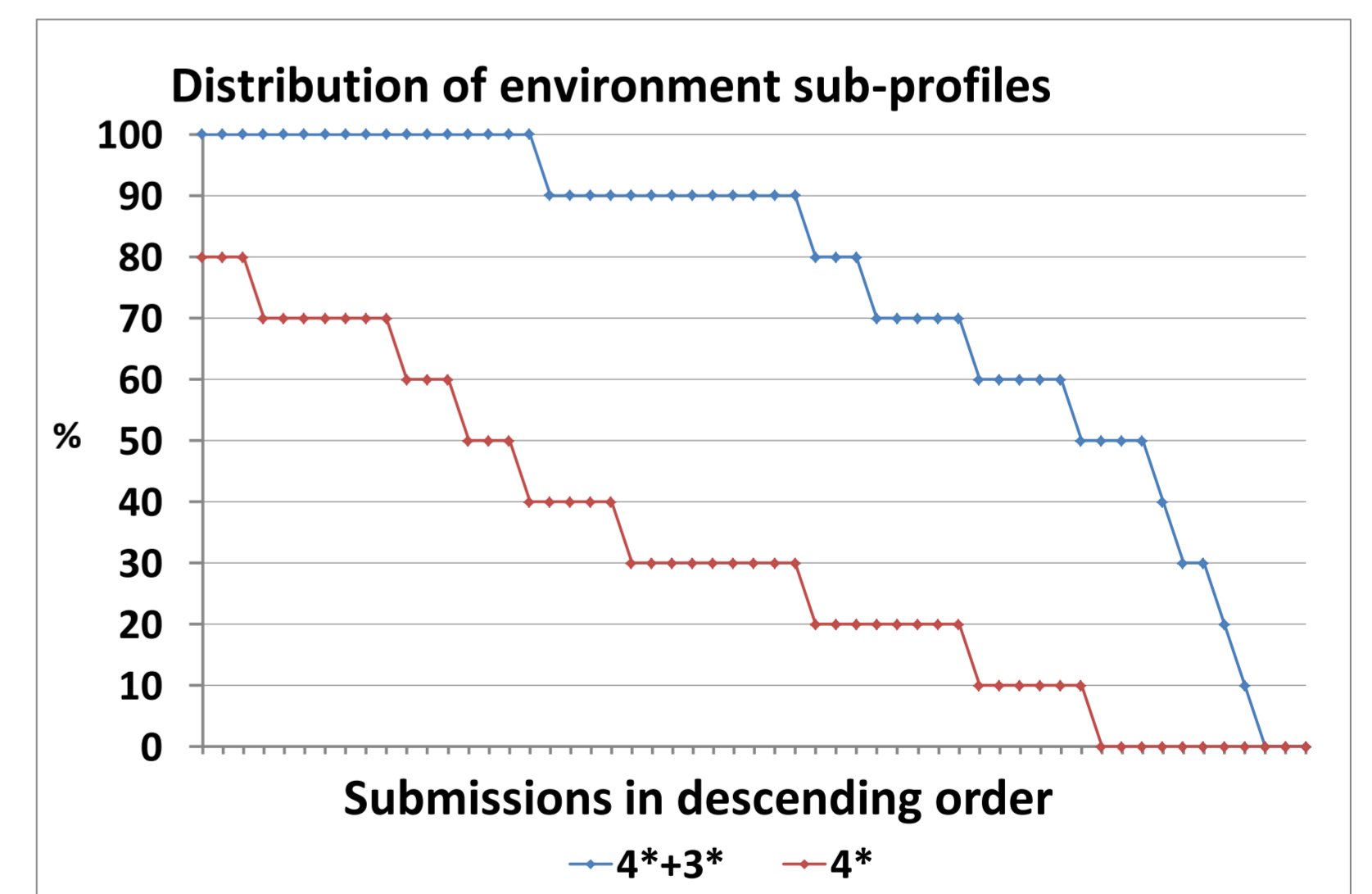
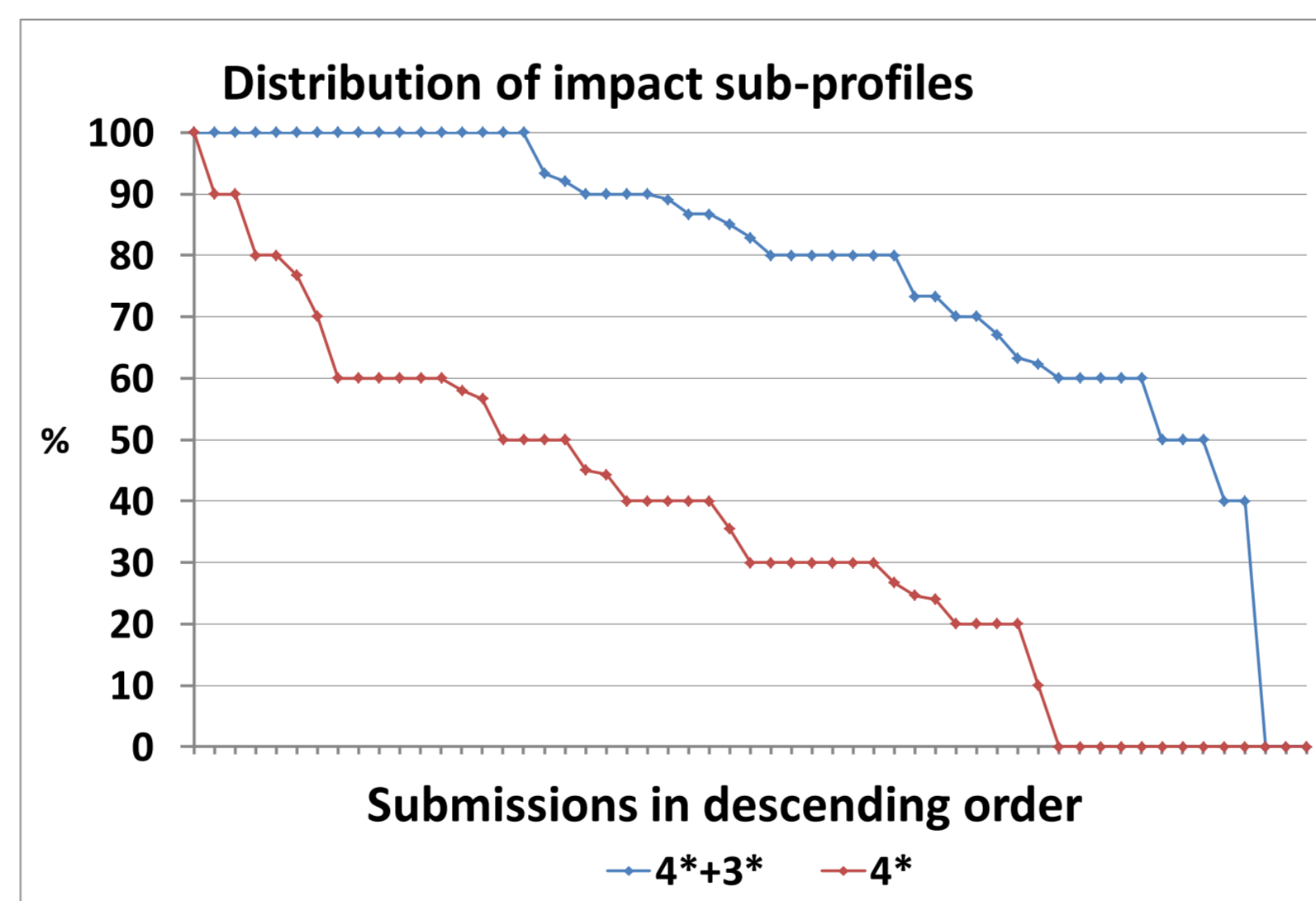
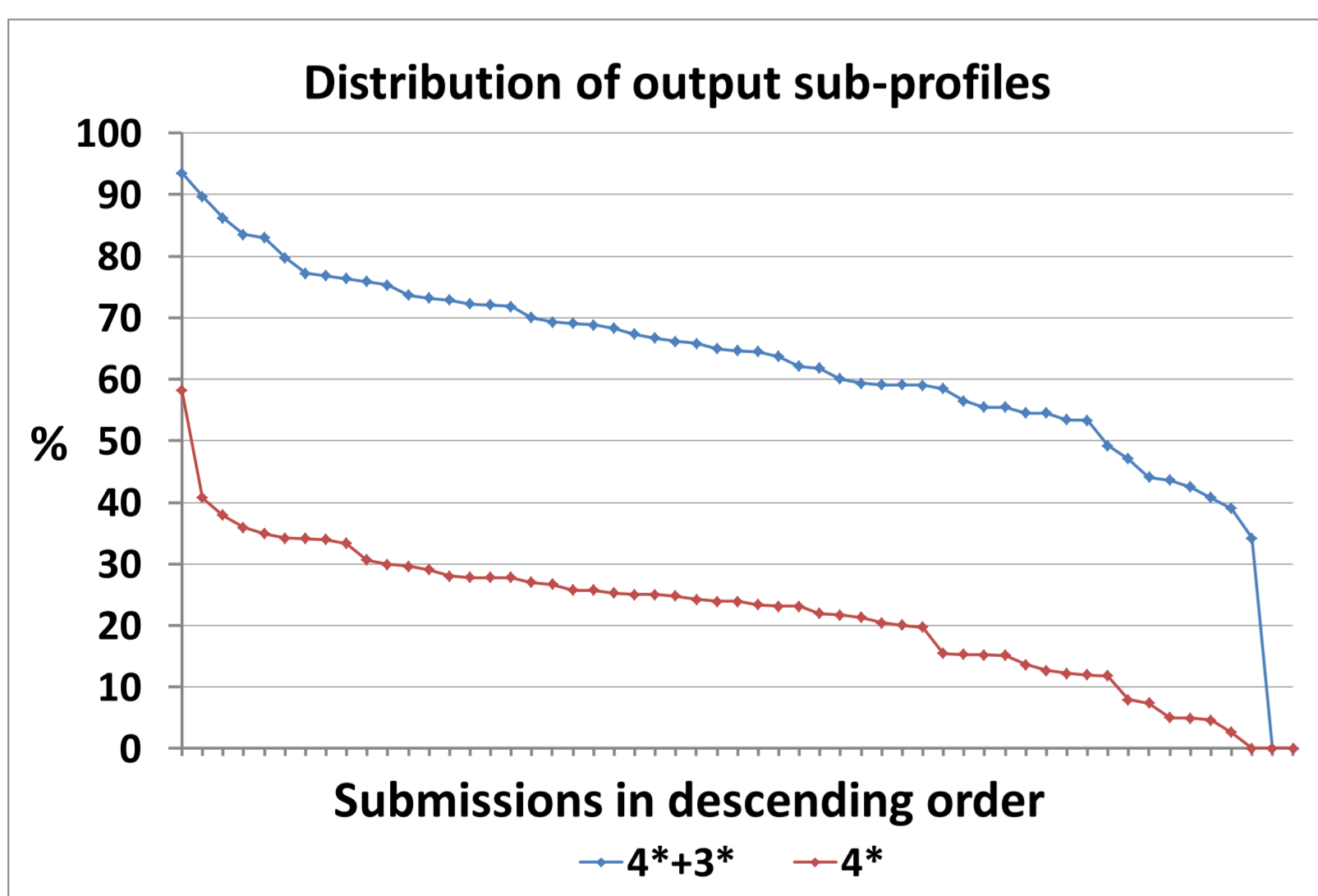
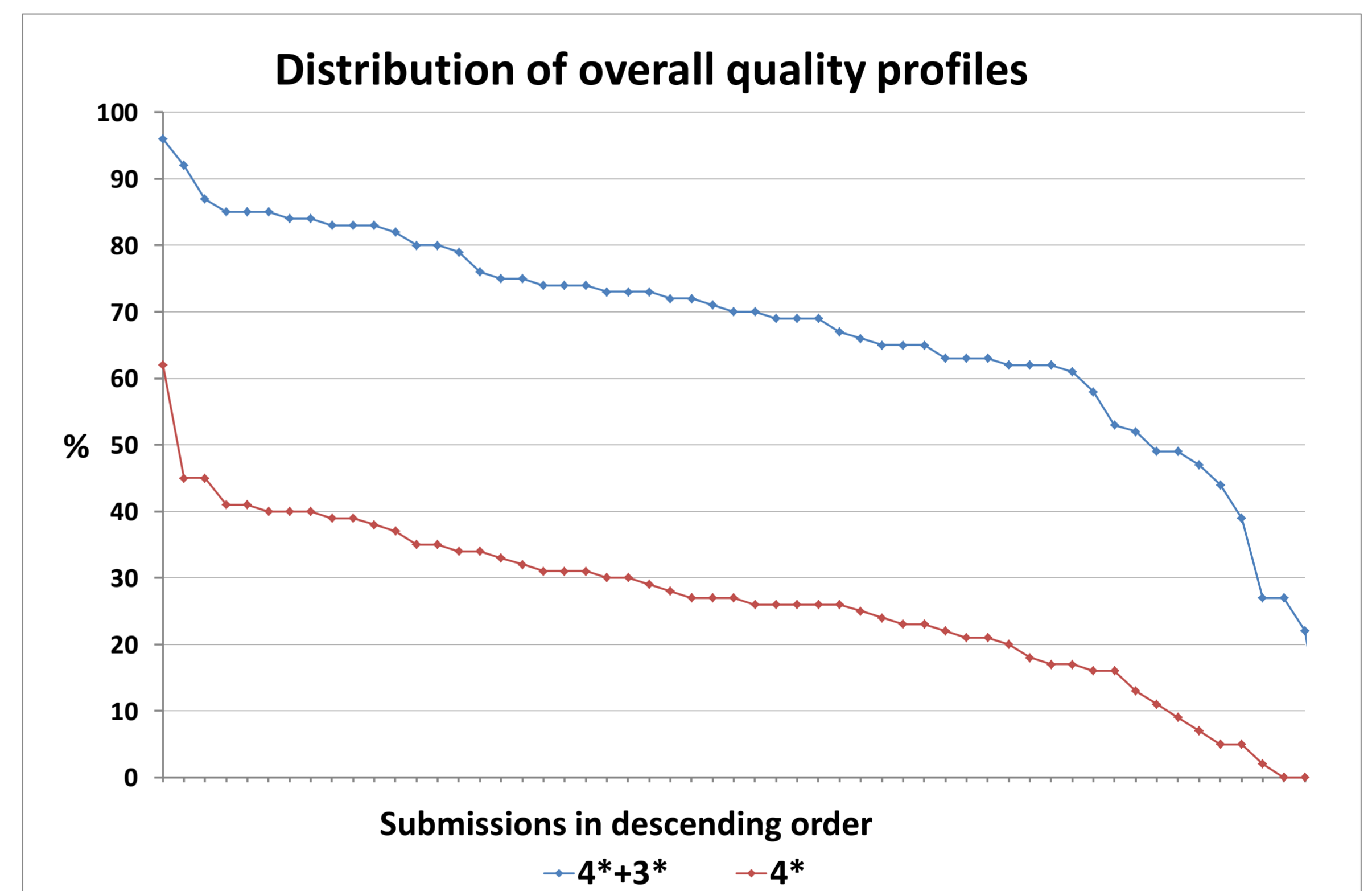
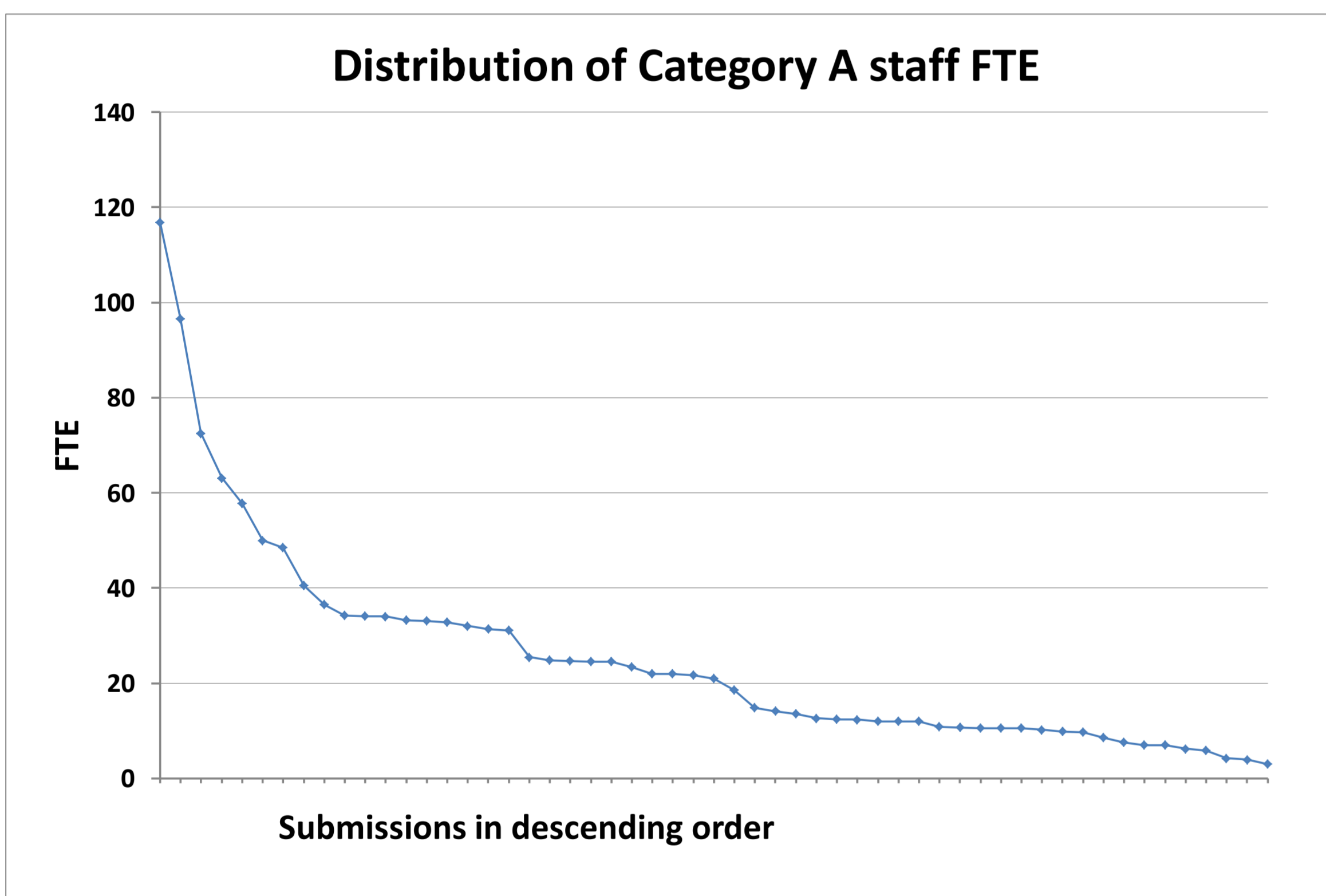
Total external research income, including income-in-kind (£M)				
2008-09	2009-10	2010-11	2011-12	2012-13
19.03	19.51	20.13	20.32	20.45



**Average overall quality profile and average sub-profiles for all submissions in the UOA (FTE weighted)<sup>1</sup>**

	4*	3*	2*	1*	U/C
<b>Overall</b>	30	42	23	4	1
<b>Outputs</b>	24.8	42.3	27.6	4.6	0.7
<b>Impact</b>	37.8	43	12.9	5.7	0.6
<b>Environment</b>	39.8	44.8	14	1.3	0.1

### Distribution of submission size and of the results in the UOA<sup>2</sup>



<sup>1</sup>The rounding methodology described in Annex B of REF 02.2011, 'Assessment framework and guidance on submissions', has been used to produce the outcomes shown in the averages table.

The average overall quality profile and average sub-profiles have been adjusted for the number of Category A staff in each submission. Submissions with 3 or fewer staff (headcounts) are excluded from the calculation of the average sub-profiles.

<sup>2</sup>Each line in each chart below is plotted in descending order. As a result, the ordering of submissions in each chart -and the order of submissions shown on each line( 4\*+3\* and 4\*)- are not the same.